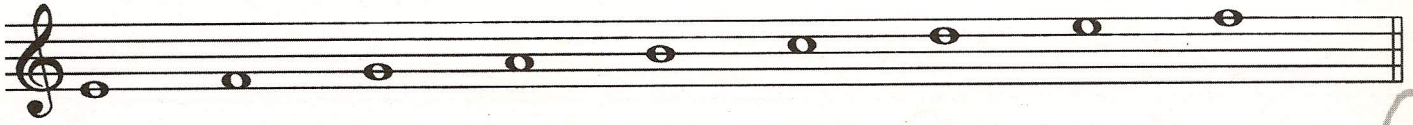
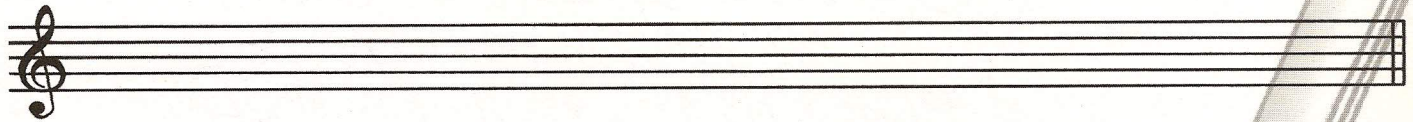


SCHEDA OPERATIVA N°6: NOTE SULLE RIGHE, NOTE NEGLI SPAZI.

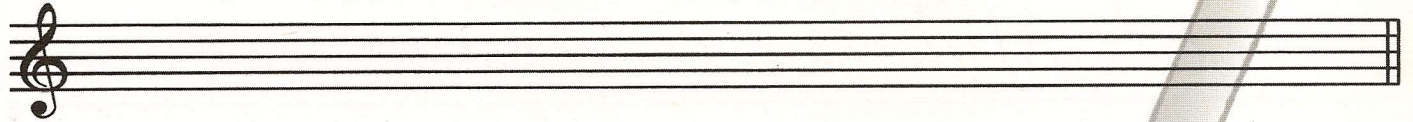
LE 9 NOTE SUL PENTAGRAMMA, IN CHIAVE DI SOL:



SCRIVI QUI LE NOTE SULLE 5 RIGHE



... E QUI, QUELLE NEI 4 SPAZI

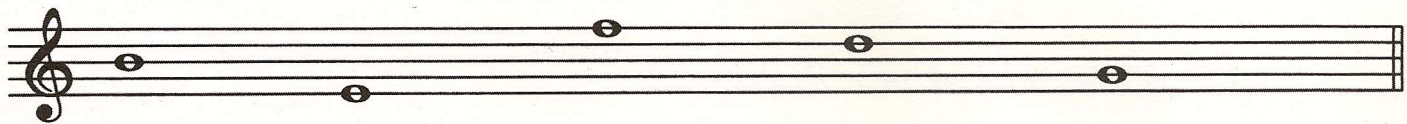


QUINDI LE NOTE SULLE RIGHE SONO: MI

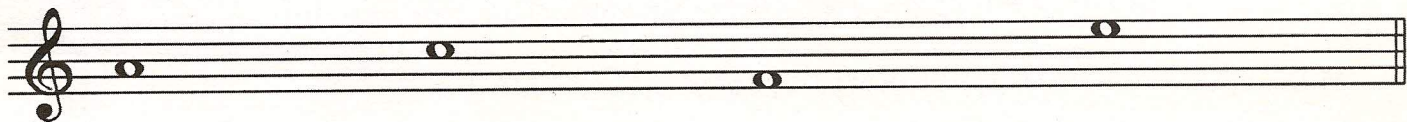
QUELLE NEGLI SPAZI: FA

METTI IL NOME SOTTO OGNI NOTA

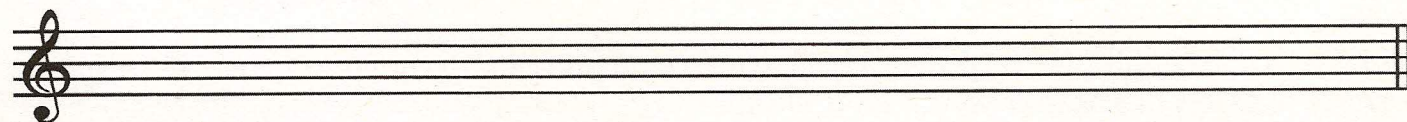
note sulle righe



note negli spazi



SCRIVI LA NOTA SUL PENTAGRAMMA, SOPRA IL RISPETTIVO NOME



MI SOL SI RE FA - FA LA DO MI